



2020 2 12

2020 32

1 2015 9 2

RIM

1

RIM

							RIM	
2015.09	RIM 25%	2,500	25%	2015 9 2	2015-061 RIM 25%		Neometals 70% PMI 30%	Neometals 45% PMI 30% 25%
2016.02	RIM 18.1%	2,715	43.1%	2016 2 5	2016-006 RIM		Neometals 45% PMI 30% 25%	Neometals 13.8% PMI 43.1% 43.1%
2017.03		2,000	43.1%	2017 3 21	2017-026 RIM		Neometals 13.8% PMI 43.1% 43.1%	Neometals 13.8% PMI 43.1% 43.1%
2019.03	RIM 6.9%	5,190	50%	2019 3 19	2019-015 RIM 6.9%		Neometals 13.8% PMI 43.1% 43.1%	PMI 50% 50%
2020.02		5,000	50%	2020 2 8	2020-008 RIM		PMI 50% 50%	PMI 50% 50%

2 RIM

RIM

	2017 6 30 /2016 7 2017 6	2018 6 30 /2017 7 2018 6	2019 6 30 /2018 7 2019 6
	115,521	195,958	194,879
	18,672	93,560	106,484
	61,767	335,879	394,437
	5,574	74,888	107,924
	-8,288	84,393	147,147
	-30,966	-16,411	-47,835
	43,938	-27,531	-122,531
	-	-	95,000
	4,938	46,436	22,553

RIM

Mt Marion

100%

Mt Marion

2015 9

RIM

Neometals PMI

2500

Neometals

RIM 25%

Mt Marion

Mt Marion

6%

49%

6%

RIM

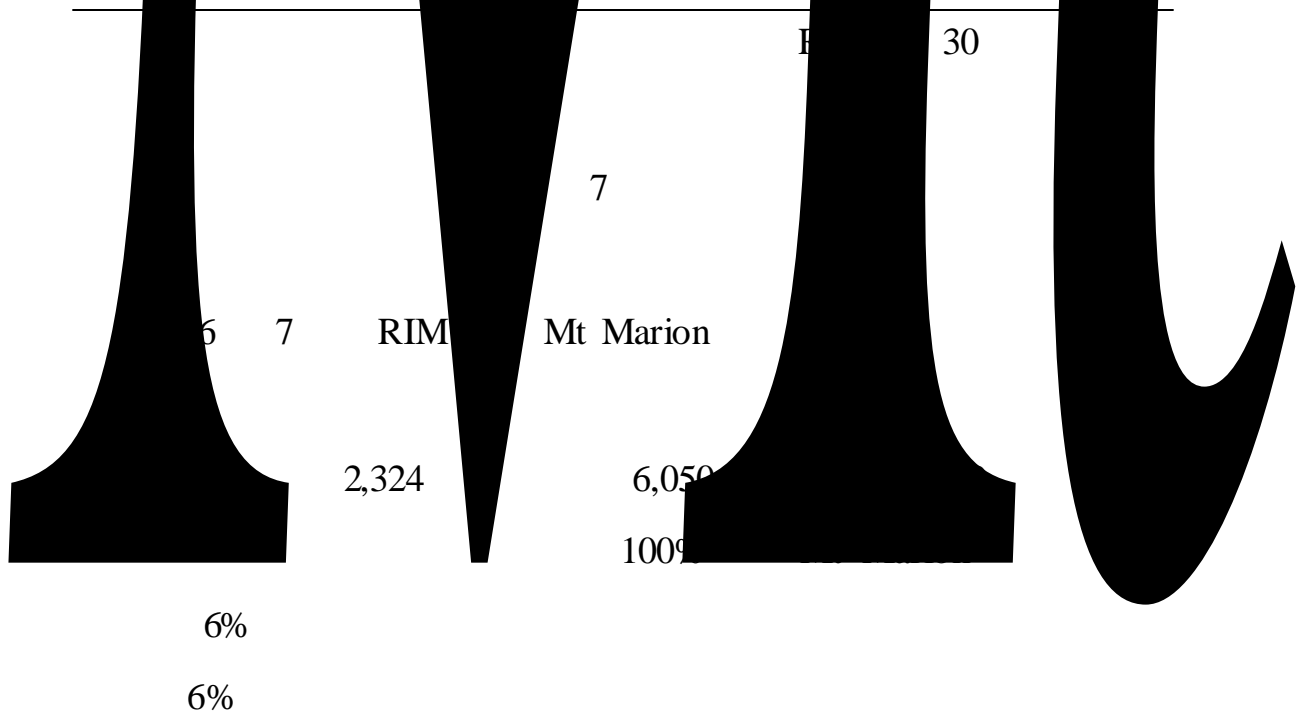
RIM

Mt Marion

20

RIM

Mt Marion



Capital	51%	38,000	
	46,530		100%

1 **2018** **NHC**

					Minera Exar 37.5%			
2020.02		38,000	100%	2020 2 8	2020-010		100%	100%
		46,530						

NHC Exar Capital

	2018 12 31 / 2018	2019 6 30 / 2019 1-6
	60,848	183,219
	3,782	11,224
	1,282	7,579
	1,211	7,305

Lithium Americas Corp.

Minera Exar

Jujuy

Cauchari-Olaroz

Minera Exar 37.5%

2018 8

2,720

Netherlands Holding Corp.

Exar Capital

Exar Capital

3,330

Exar Capital Minera Exar

3,330

Cauchari-Olaroz

Exar Capital

688,776

Exar Capital

688,776

	2018 12 31 / 2018	2019 6 30 / 2019 1-6
	60,344	90,470
	60,518	90,461

	-	-
	26	58

2018 8

8,530

											Minera Exar		
2018.08	Minera Exar 37.5%	6,030	37.5%	2018 8 14	2018-080 Minera Exar 37.5%							50% SQM 50%	62.5% 37.5%
2018.08	NHC Minera Exar						5,220	2018 8 14	2018-083 NHC Minera Exar				
2019.03	Exar						10,000	2019 3 8	2019-010 Exar				

	Capital Minera Exar								Capital Minera Exar 2019			
2019.04	Minera Exar 141,0 16,944	16,000	50%	2019 4 2	2019-031 Minera Exar						62.5%	50%
2020.02	Minera Exar 14,389,484 2	21,632.65	51%	2020 2 8	2020-010 Minera Exar						50%	49%
		43,662.65						15,220				

2 **Minera Exar**

Minera Exar

	2017	12	31	2018	12	31
	/2017			/2018		

	592	887,300	4,722,700
--	-----	---------	-----------

Minera Exar

2020 2 14

A

Minera Exar S.A.

2020 143 2019 6 30

Minera Exar 74,078.51

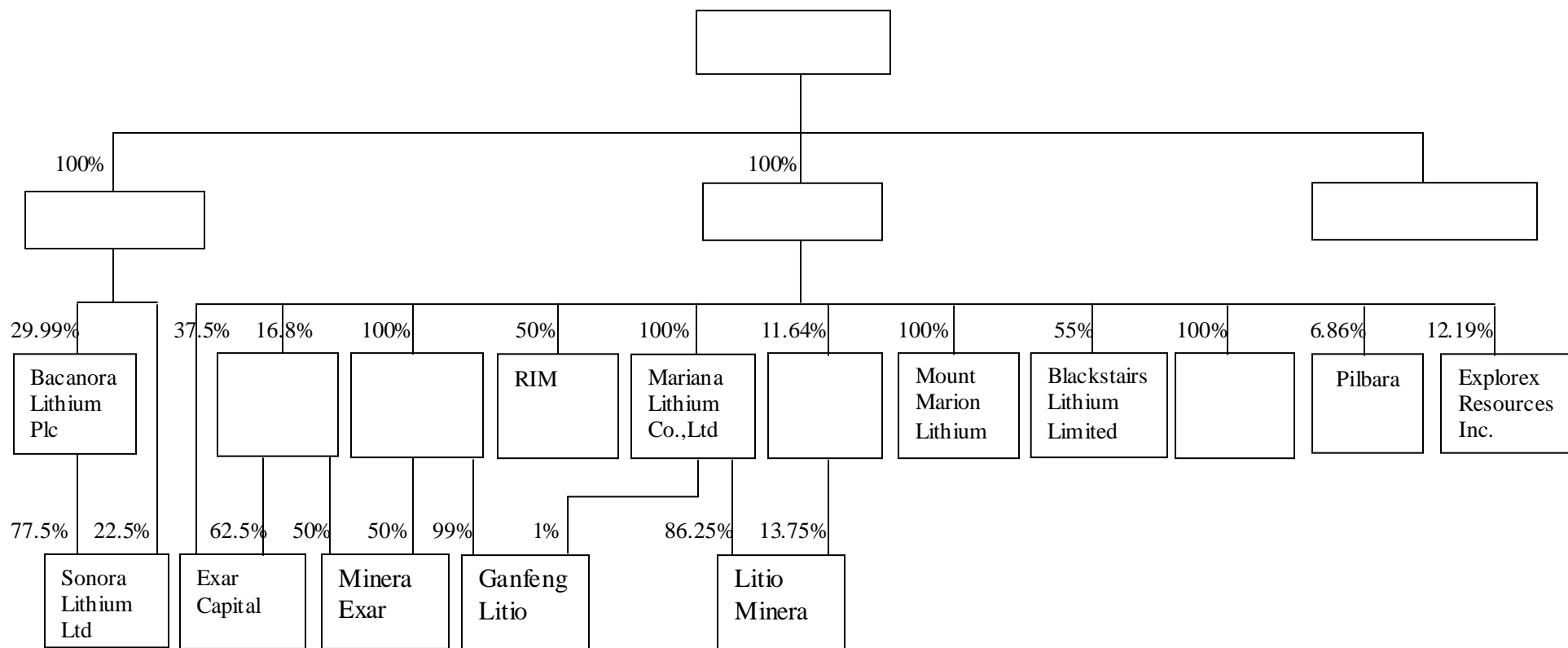
4 2019 3 8

Exar Capital

1

Exar Capital

Minera Exar 2020 2



Minera Exar	50.00	Mariana Exar	Minera
		Hernan	Minera Exar
Exar Capital	37.50		

Exar Capital

Exar

Capital 4,000

2020 3 24

2020

Exar Capital

2020 2 8

www.cninfo.com.cn

2020-011

Exar Capital

www.cninfo.com.cn

2014 17

2013 110

2015 31

40

3

2019

2021

2

14

A

A

43.25 /

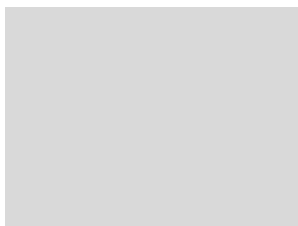
A

2017

2019 12 31

2019

A



	2018 /			2019 /			2020 /2020			12 31			
	2018	12	31	2019	12	31	2020	12	31	2020	12	31	
/													
/			5.87			6.25			6.90			8.22	
			26.93%			14.670%			14.40%			12.81%	
			27.65%			15.06%			14.78%			13.15%	
2 2019							2018	2020					
							2019	5%					
			122,328.69			122,328.69			128,445.12			128,445.12	
(125,611.26			125,611.26			131,891.82			131,891.82	
)			792,364.38			807,989.79			897,656.91			1,108,456.91	
/			1.07			0.95			0.99			0.98	
/			1.10			0.97			1.02			1.00	
/			5.87			6.25			6.94			8.26	
			26.93%			14.67%			15.06%			13.40%	
			27.65%			15.06%			15.47%			13.76%	
3 2019							2018	2020					
							2019	10%					
			122,328.69			122,328.69			134,561.56			134,561.56	
			125,611.26			125,611.26			138,172.39			138,172.39	

	2018 /			2019 /			2020 /2020			12 31		
	2018	12	31	2019	12	31	2020	12	31	2020	12	31
(
)												
			792,364.38			807,989.79			903,773.35			1,114,573.35
/			1.07			0.95			1.04			1.02
/			1.10			0.97			1.07			1.05
/			5.87			6.25			6.99			8.31
			26.93%			14.67%			15.72%			14.00%
			27.65%			15.06%			16.14%			14.37%

	2019 12 31	%		
Minera Exar	22,155.70	50.00	Cauchari-Olaroz 2020	2021 2021
RIM	8,872.05	50.00	4% 6% 2017 2017 6 30 2018 6 30 74,888 2018 6 30 2019 6 30 107,924 2019 RIM 2019 5	
Exar Capital	93.75	37.50	2018	1,211 2019 7,305
	4,689.56	16.80	Cauchari-Olaroz Thacker Pass project 2021 7.4 Thacker Pass project 26 2018 2019 9 30 1.6 20 2020 2 1.78	
Bacanora	1,440.01	29.99	Bacanora Sonora 880 Sonora Sonora	Sonora Bacanora

Sonora	756.36	22.50	2020 2 20 Bacanora 2019 12 31	Sonora
	5,049.21	20.00	2017 -2018 2019 2019	

2019

7

	2016	2017	2018	2019 9
	38.09	79.99	135.21	140.22
	24.91	40.43	79.77	81.94
	0.56	9.87	14.20	19.18
	7.00	22.78	30.68	47.25
	28.44	43.83	50.04	42.11
	4.65	14.69	12.24	3.28
EBITDA	6.46	18.95	16.17	--
	6.58	5.04	6.85	2.28
%	33.83	39.36	35.49	23.45

%	21.28	44.95	20.36	4.06
%	34.61	49.45	41.00	41.56
%	21.94	36.04	27.78	36.57
	1.24	1.62	2.07	1.68
EBITDA	0.92	0.83	0.53	--

	50,000.00		50,000.00
	59,500.00	12,800.00	46,700.00
	80,000.00		80,000.00
	1,366,500.00	381,166.03	985,333.97

A+H

2020 2 25