

香港交易及結算所有限公司及香港聯合交易所有限公司對本公告的內容概不負責，對其準確性或完整性亦不發表任何聲明，並明確表示，概不對因本公告全部或任何部分內容而產生或因倚賴該等內容而引致的任何損失承擔任何責任。



Ganfeng Lithium Co., Ltd.

江西贛鋒鋰業股份有限公司

(於中華人民共和國註冊成立之股份有限公司)

(股份代號：1772)

海外監管公告

本公告乃根據香港聯合交易所有限公司證券上市規則第13.10B條刊發。

根據中華人民共和國的有關法例規定，江西贛鋒鋰業股份有限公司(「本公司」)在深圳證券交易所網站(<http://www.szse.cn>)刊發了以下公告。茲載列如下，僅供參閱。

承董事會命

江西贛鋒鋰業股份有限公司

董事長

李良彬

中國、江西

二零二零年六月十二日

於本公告日期，董事會成員包括執行董事李良彬先生、王曉申先生、鄧招男女士及戈志敏先生；非執行董事于建國先生及楊娟娟女士；以及獨立非執行董事劉駿先生、黃斯穎女士、徐一新女士及徐光華先生。

002460



GANFENG LITHIUM CO. LTD



平安证券
PING AN SECURITIES

5023

B

22-25

2020 4 3

" "

1

2

	1		Minera Exar	
Minera Exar	37.5%	2020	2	1.63
Minera Exar		1438.95		
Minera Exar	51%			8
	2018	2.93		Minera Exar
2017-2019	1-6			
		ME50%		ME
470			62.50%	ME
	1		50%	51%
	Minera Exar			
	2			
3	3		Minera Exar	
		3	Minera Exar	
				4
	5			
	LCE	2018		1175
1798		4		2.5
	6	ME	470	
				7
				Minera
Exar				

2019

Minera Exar

9

Minera Exar

50%

51%

Minera Exar

Minera Exar

1	Exar	Minera 37.5%	[2018]862	N365.26 1MC w971



NHC Minera Exar

2018 8 31

2018

2018 9 21

Minera Exar 37.5%

[2018]862

N3600201800125

2018 11

Minera Exar 37.5%

2

A

50%

2019 4 1

Minera Exar



16,326,531 Minera Exar 14,389,484

Minera Exar 51% 2020 3 24 2020

2020 2 7

TRANSACTION AGREEMENT

"

"

2020 6 11

Minera

Exar 51%

[2020]376

2020 6 10

N3600202000031

Minera Exar 37.5%

Minera Exar

50%

Minera

Exar 51%

Minera Exar

51%

3

3

Minera Exar

Minera Exar

A

Minera Exar

"

"

1.60

Minera Exar

1.41

Minera Exar 50% 2019 8

50%

Minera Exar

Minera Exar

Minera Exar

Minera Exar

Cauchari-Olaroz

3

Minera Exar

Cauchari-Olaroz

Minera Exar

Cauchari-Olaroz

80%

Minera Exar

4

2

Minera Exar

Minera Exar

Hernán Miguel Zaballa

Minera Exar

Minera Exar

		Minera Exar
	1996 12 2000 2 2000 3 2010	1988 7 1997 1 Minera Exar
	1991 7 1992 4 2002 7 2002 8 2005 6 2006 7 2010 12	1992 4 Minera Exar
	2007 2008 2010 2011 2018 7	Minera Exar

	M&J Potash Corporation	Sanya	
	Resource Corporation	2018	
	8	Ganfeng Litio Argentina	
	S.A. Litio Minera Argentina S.A		

Minera Exar 51%

Minera Exar 49%

Minera Exar

5

Minera Exar

Minera Exar

51%

Minera Exar

51%

Minera Exar

Minera Exar

Minera Exar

Minera Exar

51%

Minera Exar

Minera Exar

Minera Exar

Minera Exar

33

40

			Minera Exar	50%
	Minera Exar			3
		Minera Exar		
Minera Exar			2	
	Minera Exar			Minera Exar
	Minera Exar			
		Minera Exar	Minera Exar	
		33		2
		Minera Exar	50%	
2	Minera Exar		51%	
		Minera Exar		51%
	E	"		
Minera Exar		50%	51%	Minera
Exar	"			
	Minera Exar		51%	Minera Exar
51%		49%	Minera Exar	
	5			
Minera Exar				
Minera Exar			Minera Exar	
			Minera Exar	
	Minera Exar			
Cauchari-Olaroz			Minera Exar	

Minera Exar

51%

Minera Exar

Minera Exar

Minera Exar

Minera Exar

Minera Exar

Minera Exar

Jujuy

Cauchari-Olaroz

100%

4.0

Minera Exar

	MINERA EXAR SOCIEDAD ANONIMA
	564,067,777
	2006 7 12
	Palma de Carrillo 54, Planta Baja Of. 7, San Salvador de Jujuy (4600) Argentina
	Jujuy

2019 6 30 Minera Exar 24,311.17

2,715.69 2019 1-6 0.00 -27.68

Minera Exar

Minera Exar

Cauchari-Olaroz

Minera Exar

1 Cauchari-Olaroz

2019 3

MONTGOMERY ASSOCIATES

NI43-101

Updated Mineral Resource Estimate for the
Cauchari-Olaroz Project Cauchari-Olaroz

		354 /	
	/		
	587	651,100	3,465,700
	580	2,726,300	14,511,500
	581	3,377,400	17,977,200
	602	957,400	5,096,000

JORC

Cauchari-Olaroz

Cauchari-Olaroz

1798

LCE

2 Cauchari-Olaroz

10

		LCE	
SQM	Atacama	800	6.4
ALB			
Livent FMC	Hombre Muerto	400	1.4
Minera Exar	Cauchari-Olaroz	1,798	2.37
		LCE	
		718	1800
		248	37
		268	61

USGS

Cauchari-Olaroz

1,798

LCE

2.37

3 Cauchari-Olaroz

SQM 2016 2017 3,520 / LCE
 3,761 / LCE 2.39 / LCE 2.56 / LCE
 6.8 Galaxy Cattlin 400-550
 / 1%-1.5% LCE 4.5-5
 6.8
 6.09 / LCE
 Cauchari-Olaroz

Minera Exar

1

Cauchari-Olaroz

2020-2022
 2018 127 125.6
 59.9% 61.7%
 2020-2025
 2025 500
 EVsales 2018 200
 201.83 2.1% 2025
 2025 1.2
 15%-25% 2025 1800
 -3000

			LCE()	
	Atacama		383	1260
	Silver Peak	100%	64	
	Talison	49%	439	
	Wodgina	50%	374	
SQM	Atacama		1117	1344
	Mt Holland	50%	227	
	Talison	51%	439	664
		20%	162	
		100%	63	

1

2

SQM 23.77%

Minera Exar

Mariana 82.75%

Mount

Marion 50%

Sonora 22.5%

490

LCE

4

Cauchari-Olaroz

Minera

Exar

Minera Exar

Minera Exar

1				
1		37.5%		
		Minera Exar		SQM
Minera Exar	50%		Minera Exar	2018 8
		SQM	Minera Exar	50%
		Minera Exar	470	
Minera Exar			Minera Exar	37.50%
	Minera Exar	62.50%		
		SQM		
	0.60		0.50	1.10
		Minera Exar		2.93
				1.00
		Minera Exar		0.52
	SQM		Minera Exar	
	Minera Exar			SQM
	Minera Exar			Cauchari-Olaroz
LCE				
2		50%		
		1.60		Minera Exar
1.41				Minera Exar
50%		6.4		8.0
				Minera Exar
3		51%		
		1,632.65		Minera Exar 1,438.95

			Minera Exar	51%
	49%		8.0	
2				
	SQM	Minera Exar	SQM	
		Minera Exar		
		Minera Exar		
Exar	2.93			Minera
			Minera Exar	
12.5%	50%	Minera Exar		Minera
Exar	Cauchari-Olaroz			
6.4		3.47	118.43%	
1	Minera Exar			
	Minera Exar		Cauchari-Olaroz	
Cauchari-Olaroz			2.5	/
4	/	60%		
	Cauchari-Olaroz			
	Minera Exar	Cauchari-Olaroz		
		Montgomery Associate		
% - "!		2019 3	Cauchari-Olaroz	
LCE			1,175	1,798
53.02%				

2017 5

MONTGOMERY ASSOCIATES

Updated Feasibility

Study Reserve Estimation and Lithium Carbonate Production at the Cauchari-Olaroz

Salars Cauchari-Olaroz 149.90 LCE

2.5 / 40

MONTGOMERY ASSOCIATES

2.5 / 4 /

Updated Feasibility Study and Mineral

Reserve Estimation to Support 40,000tpa Lithium Carbonate Production at the

Cauchari-Olaroz Salars 2019 8 4

Updated Feasibility Study and Mineral Reserve Estimation to Support 40,000tpa
Lithium Carbonate Production at the Cauchari-Olaroz Salars Cauchari-Olaroz

363.50 LCE 4.0 /

40

2

Minera Exar

2018 10 2025 2030

2021 20% 40%

15% 30% 2030

35%

2019 2019/631 2025 2030

2021 95g/km 15% 81g/km 37.5%
 59g/km 1 2020 2021 95%
 ICCT 2001 169g/km
 2018 121g/km 1.9%

2018

	2030	2030	LG SDI SKI
	2020	2022 25-25%, 2025 25	SDI
	2019	2019 2025 100	LG
	2022	2022 Smart	LG SKI
	2022	2020 10 2025	LG
	2025	2022 12 2025 ,	SKI
	2019	2019 2021 Jeep	Electrovaya

WIND

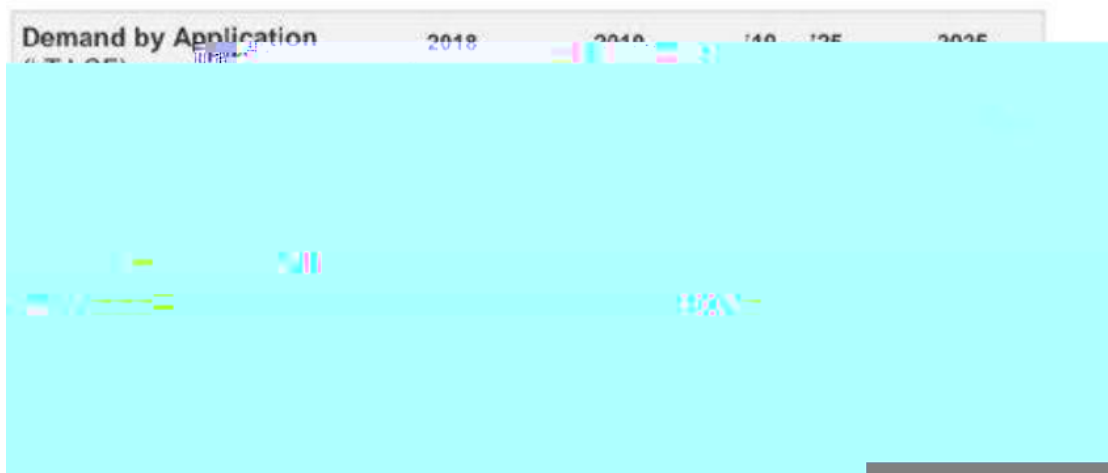
LG SDI

LG		2020 38GWh 2021 44.9GWh
		2020 8.4GWh
		2021 10GWh

		2020	13.4GWh	2023	32GWh
			8.1GWh		
SDI		2020	10-15GWh		
			11GWh		21700
			1440		
		2020			2.5GWh
		2020	35GWh		
	sumoto		2GWh		
			20		
			1		
SKI		7.5GWh			
		2020	24GWh		
		2020			36GWh
		2019			24GWh

WIND

Investor Day 2018
 26-27 2025 100
 2019-2025 CAGR 24%



2018
 29.68 6-7 70

8-1-20



Minera Exar

3

1.00

Minera Exar

0.52

SQM

Minera Exar

Minera Exar

50% Minera Exar

SQM

Minera Exar

4

Minera Exar

37.5%

Minera Exar

62.5%

Minera Exar

Minera Exar

50%

Minera Exar

Minera Exar

Minera Exar

Minera Exar

Minera Exar

Minera Exar

1

/ /

Cauchari-Olaroz

2 Minera Exar

Minera Exar 2018 12 31
[2019]
1008 7.78

				-	/
	7.78	6.40	8.0	0.22	2.83%
	8.09			-0.09	-1.11%

Minera Exar 100% 8.0
7.78 0.22
2.83% 6.4
17.74%
2019 6 30 2020

7.41
Minera Exar

Minera Exar

3

A

002738.SZ	Tanco CSF Inc CSF Limited	100%		2019	1.30		1.36	-4.41%
600988.SH	MMG Laos	100%		2018	2.75		3.0	-8.33%
002466.SZ	SQM	23.77%		2018	40.66		38.04	6.89%
600021.SH	KE	66.40%			18.97		15.86	13.20%
600699.SH	KSS	100%		2016	9.21		9.20	0.08%

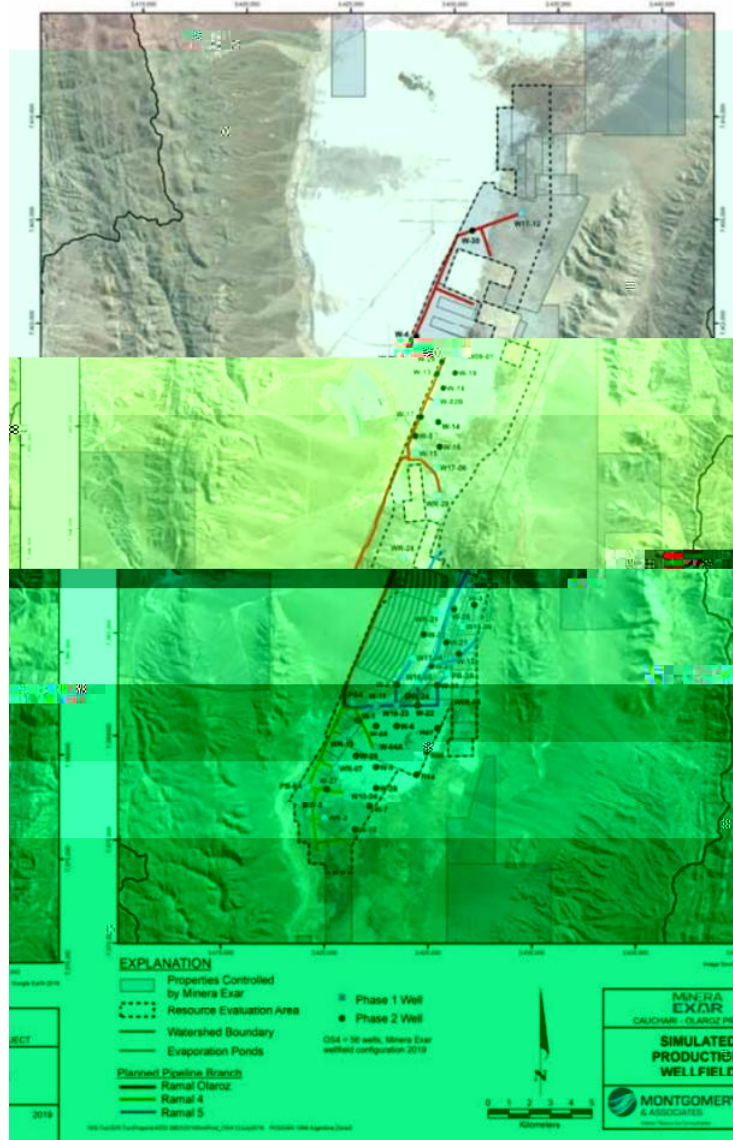
A

LCE

Cauchari-Olaroz	1,798	LCE	4	(LCE)
Cauchari-Olaroz	40			
Cauchari-Olaroz		Minera Exar	Cauchari-Olaroz	
		2.5	4	
Minera Exar		Cauchari-Olaroz		
		Cauchari-Olaroz		
LCE				
		LCE		
LCE		"	"	
2017 5		Montgomery Associates	Ausenco	Andeburg
Consulting Services Inc			NI43-101	
Cauchari-Olaroz	2.5		Updated Feasibility	
Study Reserve Estimation and Lithium Carbonate Production at the Cauchari-Olaroz				
Salars				
Cauchari-Olaroz			2.5	
LCE		FEFLOW	DHI	2010
				38
LCE				

	/		LCE
Proven Reserves (探明储量)	712	35,159	187,000
Probable Reserves (潜在储量)	695	246,474	1,312,000
	698	281,633	1,499,000

71%	71%	Cauchari-Olaroz	
Proven Reserves		Probable Reserves	1,064,383
LCE		Cauchari-Olaroz	40
2.5			100
2017	2018	Minera Exar	
2019	8	Montgomery Associates	Ausenco
Consulting Services Inc			Andeburg
			NI43



4.0 LCE 590 mg / L

LCE

	L/S	LCE			
		mg/L			
1	462	615	9,000	47,900	25,600
2	903	617	17,600	93,700	50,200
3	903	617	17,600	93,700	50,200
4	903	616	17,500	93,100	50,100
5	903	615	17,500	93,100	50,100
6	903	615	17,500	93,100	50,000
7	903	614	17,500	93,100	50,000
8	903	614	17,500	93,100	49,900
9	903	613	17,500	93,100	49,900

L/S

	/		LCE
Proven Reserves (探明储量)	616	96,650	514,450
Probable Reserves (潜在储量)	606	586,270	3,120,590
	607	682,920	3,635,040

53.7%

53.7% Cauchari-Olaroz Proven
Reserves Probable Reserves 1,952,020 LCE
Cauchari-Olaroz 40

4.0

Cauchari-Olaroz

2.5

4

ME 470

Minera Exar SQM Minera
Exar 50%
SQM Minera Exar 2,330 Irrevocable
Capital Contribution Cauchari-Olaroz

SQM Minera Exar 2018 8 13

Transaction Agreement Supplemental Transaction Agreement

1.1 SQM Minera Exar 50%

Minera Exar 470 1 /

Minera Exar 141,016,944 Minera Exar

12.5% Minera Exar

Minera Exar 0.52 SQM

Minera Exar 2018 10 30

Minera Exar

470

SQM

Minera Exar

50%

SQM

Minera

Exar

SQM

Minera Exar

1

/

Minera Exar

Minera Exar

SQM

Minera

Exar

Minera Exar

50%

51%

Minera Exar

"



				2015		2017
Roskill		2015	19.90			2017
	22.40		6.10%			2015
	9.00	2017	11.02			10.65%

	2014	0.6	/	2017	1.9	/
	200%					
2018						
		2018			1.5	/
2019		1.1	/			

					2019	
2019/631		2025	2030			2021
95g/km		15%	81g/km	37.5%	59g/km	
						2030
						2022
				25-25%		2025

LG

SDI

Investor Day

2018

26-27

2025

100

2019-2025

CAGR

24%

2018

29.68

6-7

70

Minera Exar

Minera Exar

4.0

Minera Exar

Minera Exar

Minera Exar

1

2018 12 31 2019 6 30

Minera Exar

	2019 6 30				2018 12 31		
Cauchari-Olaroz	2021						
	4.0						
	1.10		/		1.10		/
	2021	1.53	2022	3.60	2021	2.0	2022
		2023	4.0			4.0	

	0.38 /	0.32 /

12.59%-12.88%

12.77%-13.14%

royalty

WELL

Evap Ponds

Lithium Carbonate Plant

rf

rm

V

WACC

12.77%-13.14%

12.59%-12.88%

Minera Exar

2018

12 31 2019 6 30

7.78

7.41

4.76%

2

Albemarle Corp

SQM

PE

2018 12 31 2019 6 30

2018 12 31								
	PE			PE		PE	MineraExar	MineraExar
	12.87	1.07	0.19	11.09	1.00			
	24.80	1.06	0.19	21.22	1.00	14.14	15,784.12	223,253.58
	13.30	1.05	0.27	10.12	1.00			

2019 6 30								
	PE			PE		PE	MineraExar	MineraExar
	12.87	1.09	0.19	11.30	1.00	14.35	15,803.63	226,830.52
	24.80	1.07	0.19	21.43	1.00			
	13.30	1.07	0.27	10.32	1.00			

8.06

7.59

5.83%

Minera Exar

Minera

Exar

Minera Exar

2019

Minera Exar

8 -

1

2

2019 6 30

2019

Minera Exar

2019 6 30

2019

Minera Exar

	2019 12 31							
Cauchari-Olaroz	2021							
	4.0							
	40							
	2021	0.81	/	2022	0.90	/	2023	0.95
		/	2024	1.05	/	2025		1.10
					/			
	2021	1.53		2022	3.60		2023	4.0
	0.44							
	25%							
	12.90%— 13.80%							

1

Cauchari-Olaroz

Updated Mineral Resource

Estimate for the Cauchari-Olaroz Project

Updated Feasibility Study and

Mineral Reserve Estimation to Support 40,000tpa Lithium Carbonate Production at the

Cauchari-Olaroz Salars

Cauchari-Olaroz

4.0

40

2

Minera Exar

2021

38% 2022

90%

4.0

2023

4

	2012	2013	2014	2015	2016	2017	2018	2019
/	5,800.00	6,000.00	5,800.00	8,100.00	19,700.00	19,400.00	15,800.00	10,100.00

10000-12000 /

2019 7 2019 12

2019 12 31

0.93 /

2021 0.81 / 2022 0.90 / 2023 0.95 / 2024

1.05 / 2025 1.10 /

3

Cauchari-Olaroz Updated Mineral Resource
 Estimate for the Cauchari-Olaroz Project Updated Feasibility Study and
 Mineral Reserve Estimation to Support 40,000tpa Lithium Carbonate Production at the
 Cauchari-Olaroz Salars Cauchari-Olaroz

WELL

Evap Ponds

Lithium Carbonate Plant

0.44 /

0.18 /

0.04

/ 0.03 / 0.06 /

4



2019 12 31 rf rm
 V WACC
 12.90%—13.80%
 Minera Exar

	2019 12 31
Minera Exar	7.15
	50%

75%

Minera Exar 51%
Minera Exar Minera Exar

4.0 Minera Exar

Cauchari-Olaroz 4.0

Minera Exar

Minera Exar

1 "

"

1

Minera Exar

" Minera Exar

" 2019 8

Minera Exar 50%

Minera Exar

Cauchari-Olaroz

Minera Exar

3

Minera Exar

		Minera Exar				Minera Exar
					2	
		Minera Exar				Minera Exar
		Minera Exar				
2		51%				Minera Exar
		Minera Exar		51%	2020	2 7
			2020	3 25	2020	
		Minera Exar		51%		
	2020	2 7				Minera Exar
51%				Minera Exar		51%
		Minera Exar	51%			49%
	Minera Exar				5	
		Minera Exar				
		Minera Exar				
						Minera Exar
		Minera Exar				
Cauchari-Olaroz						Minera Exar
		Minera Exar			51%	
	Minera Exar					

1

Minera Exar
ZABALLA CARCHIO
Minera Exar MONTGOMERY
ASSOCIATES
Minera Exar Cauchari-Olaroz
ZABALLA CARCHIO
Minera
Exar ZABALLA CARCHIO

2

1 Minera Exar 37.5% Minera Exar
50%
Minera Exar 51%
2 Minera Exar
Minera Exar
Minera
Exar Minera Exar
Minera Exar
3 Cauchari-Olaroz

Minera Exar

Minera Exar

Minera Exar

4

A

5 Minera Exar

Usufruct

4

(LCE)

Cauchari-Olaroz

40

Cauchari-Olaroz

Cauchari-Olaroz

2.5

4

6

SQM

Minera Exar

SQM

Minera Exar

Minera Exar

SQM

Minera

Exar

1

/

Minera Exar

7

Minera Exar

8	Minera Exar		
	2019		
	Minera Exar	50%	
9	Minera Exar	4.0	Minera Exar
	Minera Exar		Minera
Exar	Minera Exar		
	Minera Exar		
		Minera Exar	
Minera Exar	51%		Minera Exar
		Minera Exar	
1	Minera Exar	37.5%	
			Minera Exar
	50%		

Cauchari-Olaroz		Minera Exar	51%
		Minera Exar	51%
Exar		Minera Exar	
1		2019	
		2019 12 31	Minera Exar
		Minera Exar	
		Minera Exar	51%
		Minera Exar	
		Minera Exar	Minera
Exar		Minera Exar	
		Minera Exar	
2	2019	Minera Exar	
		2019	
1			
		8 -	
2			2019 12 31
Exar			Minera
3			Minera Exar
			2019
12 31			
4			
5			
6			

7

2019
Minera Exar

3

2019

2019

2019

2019 534,172.02 6.75%

 35,807.10 73.30%

 69,442.33 44.72%

2018 2019

	2019	2018		
	534,172.02	500,388.29	33,783.73	6.75%
	408,620.96	319,728.14	88,892.82	27.80%

1

2015

2018

2017

2017

12.47

34.9%

2015

99.5%

7.54 /

2016

13.35 / 17.45 /

2016-2017

34.57%

40.47%

2

2015

2-3

2018

/

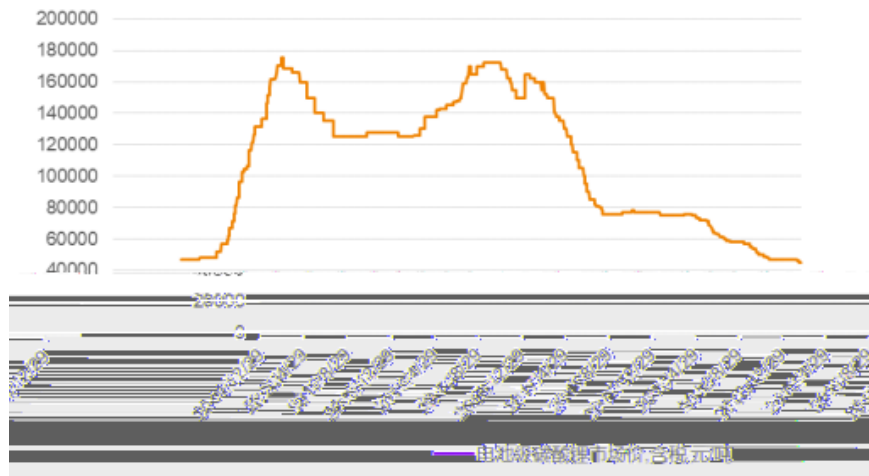
1		2	0.5	2018 1
2		1.2	0.4	2018 0.6
3		4	0.8	2018 3 0.8
		0.5		0.5
4		5		2018 2
		2.5		
5		1	3	2018 10 1

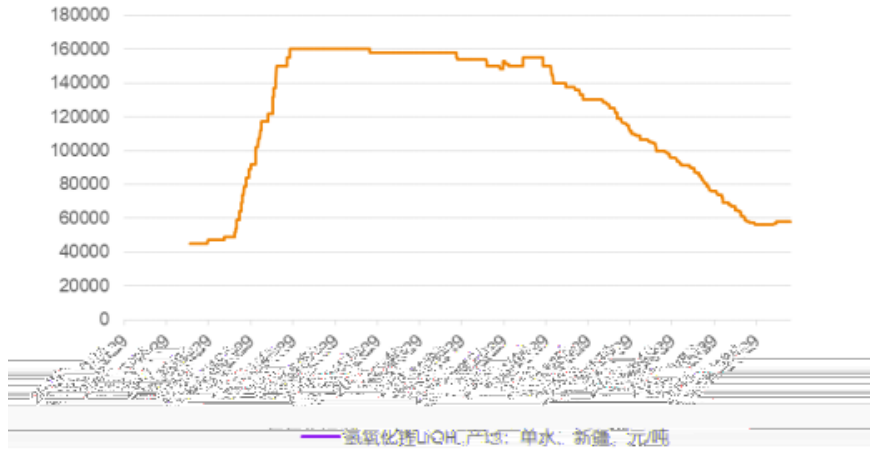
6		2	2018 1
7		2	
8		1.75 2 5	2019 1.75 2

WIND

2018

2015 1 2019 12





3

		2020	24GWh
		2020	36GWh
		2019	24GWh

[2018]18	2018.2.12	<p style="text-align: right;">2018 2 12</p> <p style="text-align: center;">2018 2 12 2018</p> <p>6 11</p> <p style="text-align: right;">2017</p> <p style="text-align: center;">0.7</p> <p>0.4</p>
	2018.4.1	<p style="text-align: center;">2019-2020</p> <p>10% 12%</p>
[2019]138	2019.3.26	<p>2019</p> <p style="text-align: right;">50% 2019 3 26</p> <p style="text-align: center;">2019 3 26 2019</p> <p>6 25</p> <p>6 26</p> <p>50%</p> <p>50%</p>

2019 6 26

2019

2018

	2018	2019	
1	38,470	95,696	148.75%
2	34,420	52,867	53.59%
3	68,000	125,631	84.75%

	2018	2019	
4	82,000	96,771	18.01%
5	102,000	104,422	2.37%
6	84,000	152,062	81.03%
7	84,000	79,784	-5.02%
8	101,000	85,255	-15.59%
9	121,224	79,755	-34.21%
10	137,863	75,058	-45.56%
11	169,343	95,375	-43.68%
12	225,000	163,448	-27.36%

2

50%

NCM811

NCM111





3.6	2020	
27	7.8	1.2
		30

2019

2018

/

/

2019 Pilbara

2019 0.65 / 2019 0.28 /

132.14% 2019

2 2019 11,472.47

2014

2019 4

2019 8,913.07 20,385.54

11,472.47

5 2019

2017 2019

146,907.81 134,134.08 35,807.10

119,414.44 125,611.26

69,442.33

22.09% 6%

	2019	4.38%
	2018	25.85%
	2017	46.37%
	2019	8.49%
	2018	24.21%

	2017	37.69%
--	------	--------

2018

118,053,903.20 2018
2018

118,053,903.20

2019

2019

2019

A

	2019	2018	
	48.41	62.44	-22.47%
	53.42	50.04	6.75%
	2019	2018	
	-59.83	22.00	-371.96%
	3.58	13.41	-73.30%
	%		
	2019	2018	
	56.56%	67.60%	-11.03%
	23.50%	36.10%	-12.60%

2019

2019

6.75%

22.48%

40%

60% 2019

2019

2018

	2019	2018		2019	2018	
	48.54%	65.25%	-16.71%	27.17%	39.97%	-12.80%

2019

2019

68.81%

Minera Exar 4

2019

73.30%

2019

2018

29.94%

Pilbara

39,516.01

2018

17,562.14

2019

2019

371.96%

35.13% 2019

SQM

16.7 SQM

2019

SQM

52.79

2019

SQM

2019

8.11% -12.81%

-2.86% -35.74%

-21.85%

-35.74%

2019

2020 1-3

2020

2020

107,884.13

2019

18.88%

774.61

2019

96.94%

	2020 1-3	2019 1-3		
	107,884.13	132,990.32	-25,106.19	-18.88%
	86,878.70	104,586.73	-17,708.03	-16.93%

1

2020

2020

2020

			/			
	2020 1-3	3,147.33	4.64	14,599.58	-7.15%	-1,043.52
	2019 1-3	5,022.05	6.44	32,354.35	8.67%	2,804.60
		-37.33%	-27.98%	-54.88%	-182.47%	-137.21%
	2020 1-3	6,263.67	7.58	47,467.82	13.07%	6,205.38
	2019 1-3	4,602.28	8.88	40,885.88	33.82%	13,826.10
		36.10%	-14.68%	16.10%	-61.35%	-55.12%
	2020 1-3	302.58	45.88	13,883.43	17.98%	2,495.64
	2019 1-3	336.52	50.81	17,099.93	48.25%	8,250.94
		-10.09%	-9.70%	-18.81%	-62.74%	-69.75%

2020

2020

1

2019

2020

2019 3 26

[2019]138

2019 6 26

50%

50%

2018

2019

2020

2020

11.4

56.4%

2020

7.58 / 1.30 /
 14.68% 4.64 / 1.80
 / 27.98%
 2 2020

2020 37.33%
 37.33%
 3
 36.10%

2 Pilbara 2020

-8,769.70

Pilbara 2020 2019
 2019 0.28 / 2020 3 0.17 /
 39.29% 2020
 7,993.39 -209.71%

2020

2019
 2020



2

2015

SQM

2019

84.6%

GGII

2019

62.38GWh

54.88GWh

87.98%

50%

3

OEM

LG SKI

LG

	2018 9	2018 2020 20%
	2018 9	2018 2023
LG	2018 8	2019 2025 LG
	2019 4	



2020 3

5.3 2 3

5 Pilbara

Pilbara

2019 0.28 /

2020 3 0.177 /

6 8 Pilbara 3 0.17 /

0.35 / 106%

Pilbara Pligangoora 2.13

282 1.32% Pligangoora 2018

500 / 2019

Pilbara 2020 4 1 Pilgangoora

2020 Pilbara 33,998

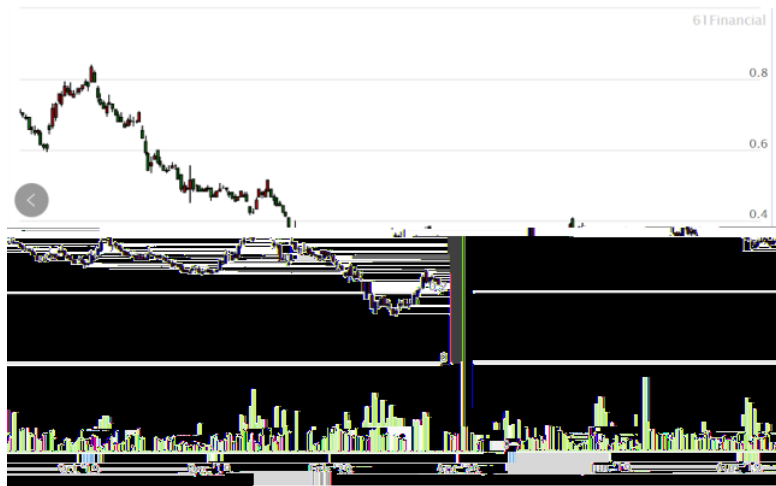
33,893

2020 1.082

Pilbara

Pilbara

Pilbara



2020

2020

0 50-70 / 2020

4 20 /

6 8 40 /

2020



2021-2035

2030

40%

2020

1

2

2020 2 28

100%

2

1

70%

RIM

Pilbara

2

LG

2020 1-4 3,804.39
8,639.50

3-5

2020 1-2 3-4

2020 1-4

			/	
	2020 1	1,165.01	6.77	7,882.85
	2020 2	1,387.10	8.67	12,030.87
	2020 3	3,711.56	7.42	27,554.10
	2020 4	2,421.41	7.12	17,232.98
	2020 1	843.53	5.08	4,284.95
	2020 2	637.00	4.42	2,817.01

	20020	3	1,666.79	4.50	7,497.62
	20020	4	2,399.28	3.85	9,230.60
	20020	1	81.00	42.33	3,428.83
	20020	2	84.25	48.01	4,044.70
	20020	3	137.33	46.68	6,409.91
	20020	4	117.78	50.93	5,998.70

3

		LG	SKI
			1
90%	2020		10.59

		RIM50%	
2020		19.26	Pilbara
			16
			15

2020	3	31	1.77
------	---	----	------

80%

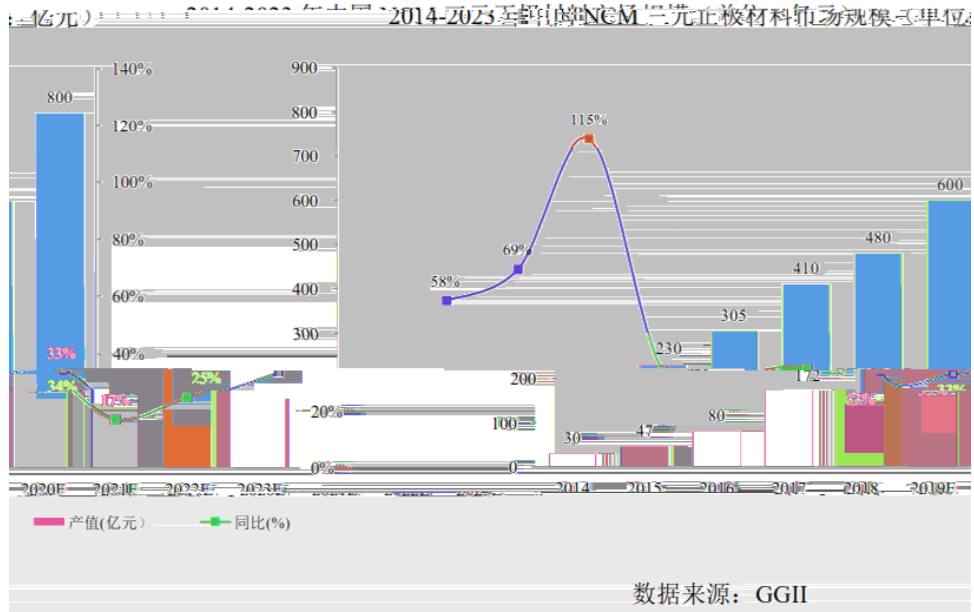
" 2 "



2018 " 2 2018 7
2019 " 2019
12 31

/

NCM



2013

2017



2020 71.6GWh
22% 70%
2016-2025
2025 20%
45KWh 40-50
2017 1 1
2020-2030 7
2025 15%-25% 2025
15% 25% 2025
200-300 20%-25%
2018

	2019	24,000	23,854.57	99.39%	20,218.74
	2018	16,000	14,736.28	92.10%	12,486.29
	2017	8,000	6,916.64	86.46%	6,199.00

2019 99.39%

10

OEM

LG

2019

1.99 2018

0.72

56% 2020 1-4

1.16 2019

58% LG

2020

1

2018 2020

20%

LG

2019 2025

4

"

"

ZL201210072089.3

5

Mount Marion

Pilgangoora

Avalonia

1 Mount Marion

Mount Marion

Mount

Marion

JORC

270

LCE

1.37%

2020

192,570

2 Pilgangoora
 Pilgangoora 2018
 Pilgangoora 708 LCE
 1.27% 16
 15

3 Avalonia
 Avalonia

"

"

"

"

"

"

"

"

"

"

" 2020

2020

96.94%



"

1

2018

2019

2020

2

1

2019

2019

2017 -2019

22.09%

A

2019

A

2

2019

3

2020

4 2020

5

6

90%

"

"

"

"

7

"

"

"

"

"

"

"

"

"

"

1

2019

2019

(

2020

61390246_B01)

2

2019

2019



（此页无正文，为《江西赣锋锂业股份有限公司关于请做好赣锋锂业公开发

行可转债发行委员会公告》之附件）

江西赣锋锂业股份有限公司



（此页无正文，为《江西赣锋锂业股份有限公司关于请做好赣锋锂业公开发
行可转债发审委会议准备工作的提示函》之签署页）



保荐机构（主承销商）董事长声明

本人已认真阅读江西赣锋锂业股份有限公司本次上会告知函回复报告的全部内容，了解报告涉及问题核查过程、本公司的内部控制程序，确认本公司按照诚实守信原则履行核查程序，上会告知函回复报告不存在虚假记载、误导性陈述或者重大遗漏，并对上述文件的真实性、准确性、完整性、及时性承担相应法律责任。

保荐机构董事长：_____

何之江



2020年6月11日